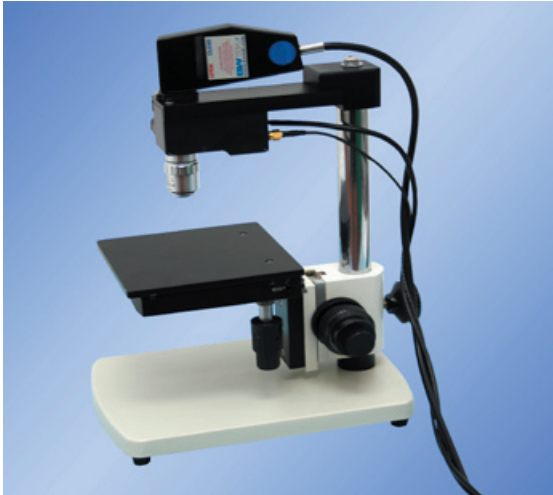


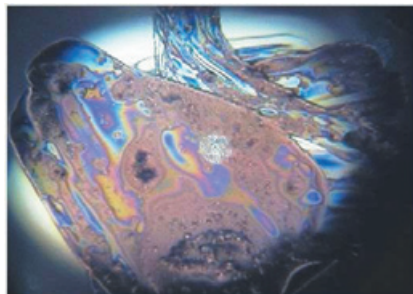
Video Microscope Sampling System



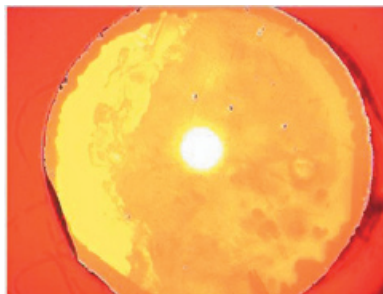
The BAC151 is a video microscope adapter. It uses the BAC150 Precision Raman Probe holder and is compatible with the BAC100 or BAC101 Raman probes. The BAC150 platform provides both coarse and fine adjustments in the XYZ directions. The BAC 151 adds an LED illuminator and a video camera for convenient alignment and viewing of the measurement field. The BAC151 accepts standard microscope objectives.

Highlights

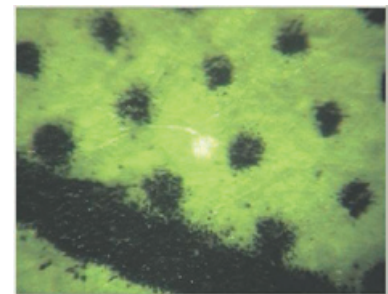
- *Compatible with B&W Tek's lab and industrial Raman probes*
- *Coarse and fine XYZ adjustments*
- *Coaxial LED illuminator for target sample alignment*
- *Video camera for sample viewing*
- *Accepts standard microscope objectives*



Contamination on silicon
Bright field illumination
20X magnification
True color



Diamond window
Bright field illumination
5X magnification
False color



Print on paper
Dark field illumination
20X magnification
False color

BAC151

Video Microscope Sampling System Typical Specifications

Optics	
Long working distance microscope objective	20X included
Infinite corrected, plan achromatic	5X, 10X, 40X, 50, 80X optional
Working distance	20X 8.7 mm (13mm and 20mm optional) 5X 18.3 mm 10X 8.9 mm 40X 3.7 mm 50X 2.02 mm 80X 0.96 mm
Illuminator, 2 types	Bright field, coaxial, LED, 0.2 watt Dark field, off-axis, LED, 0.2 watt interchangeable
Video camera	
Color CCD format	1/4 inch
Resolution, active pixels (HxV)	786 x 494
Viewer display pixels	750 x 480
Shutter speed	Automatic from 1/60 - 1/100,000 second
Power for camera	Through USB (cable included)
Video image display	Through BWSpec
Mechanics	
Microscope objective threads	Interchangeable international standard
Coarse and fine adjustment	Coaxial
Vertical travel through boom stand	89.5 mm
Vertical coarse adjustment, travel	52 mm
Vertical fine adjustment, travel	0.5 mm
XY sample stage travel	in x direction: 42 mm In y direction: 33 mm
Interface with Raman probe	3/8 inch shaft diameter for lab probe BAC100 12 mm shaft diameter for immersion or industrial probe BAC101. Need to specify before order
Dimensions & Weight	168 x 236 x 298 mm, 8.8 kg
Power consumption	1.5 W
Power supply required	5V DC, 150 mA (power cable is included)