

SCL100 Spectral Calibration Source



The SCL100 series Spectral Calibration Sources come in 6 lamp models: Argon (Ar), Krypton (Kr), Mercury (Hg), Mercury/Argon (Hg/Ar), Neon (Ne), and Xenon (Xe). These sources can be used for wavelength calibration of monochromators, spectrometers, and spectroradiometers. By exciting these various gases they will produce narrow intense lines of the corresponding element(s). This light source comes with a 12V DC power supply and features an SMA 905 connector for fiber optic light coupling with no need for fiber alignment.

Highlights:

- Compact and Light Weight
- Portability
- Fiber Coupled
- Various Lamp Selections UV - NIR
- Excellent Stability

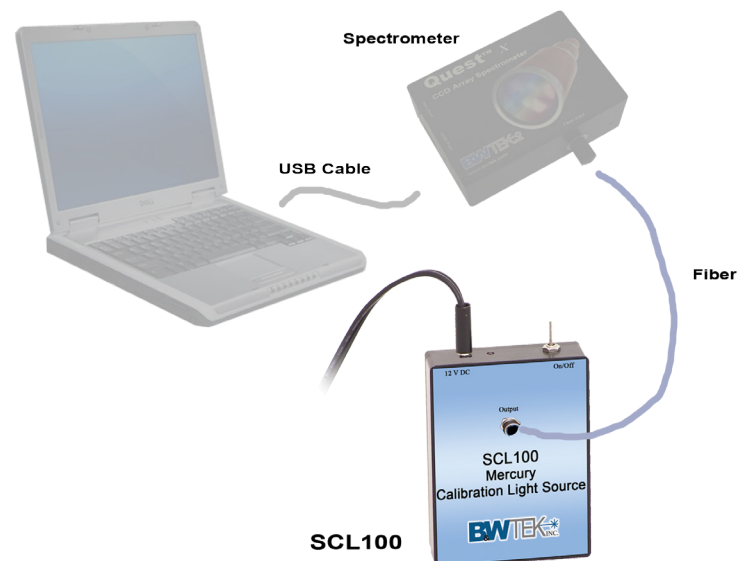
Applications:

- Calibration of Spectroscopic Instrumentation
- Resolution Testing / Verification

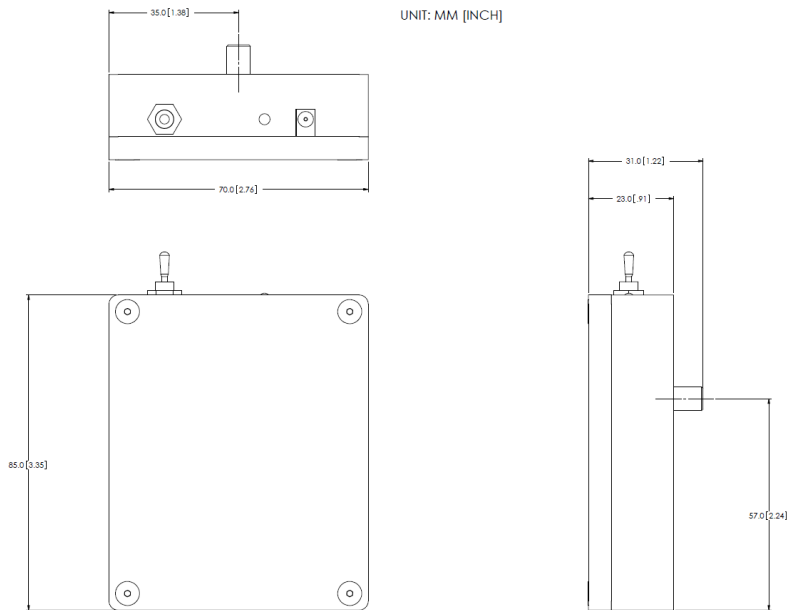
Specifications:

AC Adapter Input	100 - 240V, ~47 - 63Hz
AC Adapter Output	12V DC 0.83A Max
Lamp Operation Voltage	<=350 V rms, +/- 5%
Lamp Operation Current	20mA, +/- 5%
Light Coupling	SMA 905
Operating Temperature	15° to 35°C
Humidity	0-85% RH non condensing
Dimensions	85 x 70 x 31mm (L x W x H)
Weight	135 grams

Calibration / Resolution Verification Setup

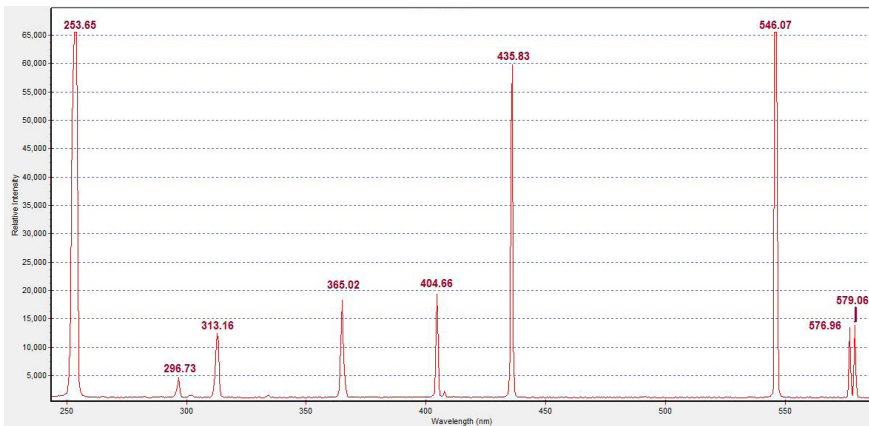


Dimensions (mm):

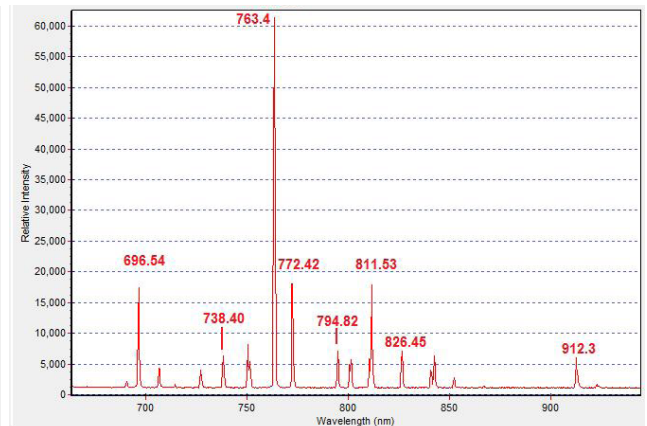


Mercury has strong spectral lines throughout the UV-Vis region. The Argon line spectrum features a number of spectral lines high intensity between 700nm and 1000nm. There are also several lines spaced less than 1nm apart that can be used for resolution testing. Neon and Xenon have a large number of lines of medium to high intensity in the 800nm to 2400nm range for wavelength calibration and resolution testing in the NIR region.

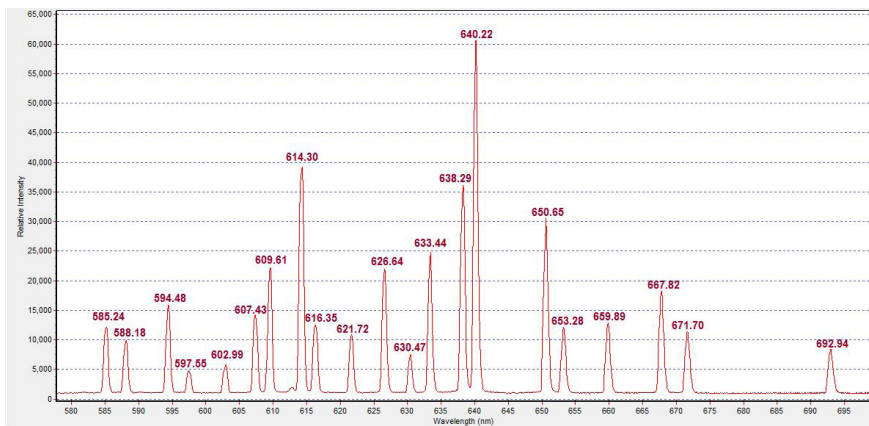
Mercury



Argon



Neon



Krypton

