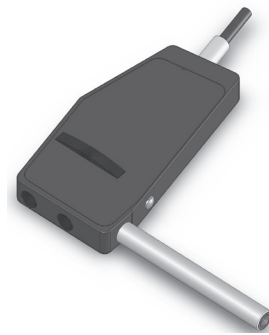


**Raman Accessory** **BAC102 Raman Probe**

B&W TEK's new Raman probe with hand trigger is designed to allow sampling of materials such as liquids, powders, slurries, and solids both in lab and process conditions. The innovative design is using state of the art telecom packaging techniques (patent pending) and optimized optical lenses. The hand trigger provides the convenience of point-and-shoot operation. Compatible with virtually all SMA coupled spectrometers, the hand trigger Raman probe is ideal for applications in the field and selected process applications. The hand trigger Raman probe is available for 785nm excitation wavelength and 532nm excitation wavelength.

**Highlights:**

- Optimized optical design
- State of the art packaging
- Optimal signal
- Excellent Long-term stability

**Specifications:**

Fiber for excitation	105 $\mu$ m core with FC/PC connector
Fiber for collection	200 $\mu$ m core with SMA 905 male connector
Fiber length	1.5 meter
Excitation wavelength	785 nm for BAC102-785 (place order as BAC102-785) 532 nm for BAC102-532 (place order as BAC102-532) Other excitation wavelength options are available
Laser blocking	OD6 default, OD8 optional
Shaft diameter	3/8"(9.5 mm) diameter
Shaft material	Standard stainless steel 316L; optional Hastelloy C, Titanium
Shaft length	3" (76.2mm)
Window material	Standard flat quartz Optional flat sapphire and sapphire ball
Seal material	For Lab, epoxy sealed For process, Kalrez O-ring or customer specified
Trigger Switch	SMD light touch switch
Sampling lens focal distance	8.1 mm
Working distance	5.90 mm
Spot size at sample surface	85 $\mu$ m
Maximum pressure	Lab Version: 30 PSI; Process Version: 150 PSI
Maximum temperature	Lab Version: 80 °C; Process Version: 150 °C, at tip of the probe

**Dimensions (mm):**